

Need a Mortgage in principle
to make offers? Call us now
for quick assistance!
0121 775 0101



Do you need to sell?
Start your journey now!
Call us we can help.
0121 775 0101



SCAN FOR MORE INFO
SIZE - 1510 Sq Ft
TENURE - Freehold
COUNCIL TAX - Solihull Metropolitan Borough Council - E
BROADBAND - Upload Max 1000Mbps
Download Max 1800Mbps
MOBILE - O2 Vodafone
EPC - C - 67
PARKING - For at least 2 Cars
FLOODRISK - Very Low
SERVICES - Mains
COVENANTS - N/A

OAKLAND CLOSE

Solihull, B91

Tucked away in the cul-de-sac of Oakland Close this end terrace house offers a delightful blend of space and comfort, perfect for family living. This three-storey home creates an exciting opportunity to create a self contained annexe, perfect for accommodating guests or or older children.

FEATURES

- Spacious Three Storey Family Home
- Living Room with Kitchenette
- Ground Floor Bedroom
- Shower Room
- Lounge with Balcony
- Fitted Kitchen/Dining Room
- Three Third Floor Bedrooms
- Family Bathroom
- Private Rear Garden
- Driveway Parking
- Walking Distance to Solihull Town Centre

Are you an investor
interested in expanding your
portfolio?

Call 0121 775 0101 to provide your investment criteria for alerts.



SCAN TO **VIEW OUR**
WEEKLY FILMS &
SUBSCRIBE

Sneak Peeks

Every week, we unveil "Sneak Peeks," a feature showcasing exclusive properties before they hit Rightmove and other platforms.

The Landlord Club

Join our Landlord Club for weekly updates on legislation, market trends, and our Letting Director's 'Investment Pick of the Week' for optimal ROI.

HTSPMD

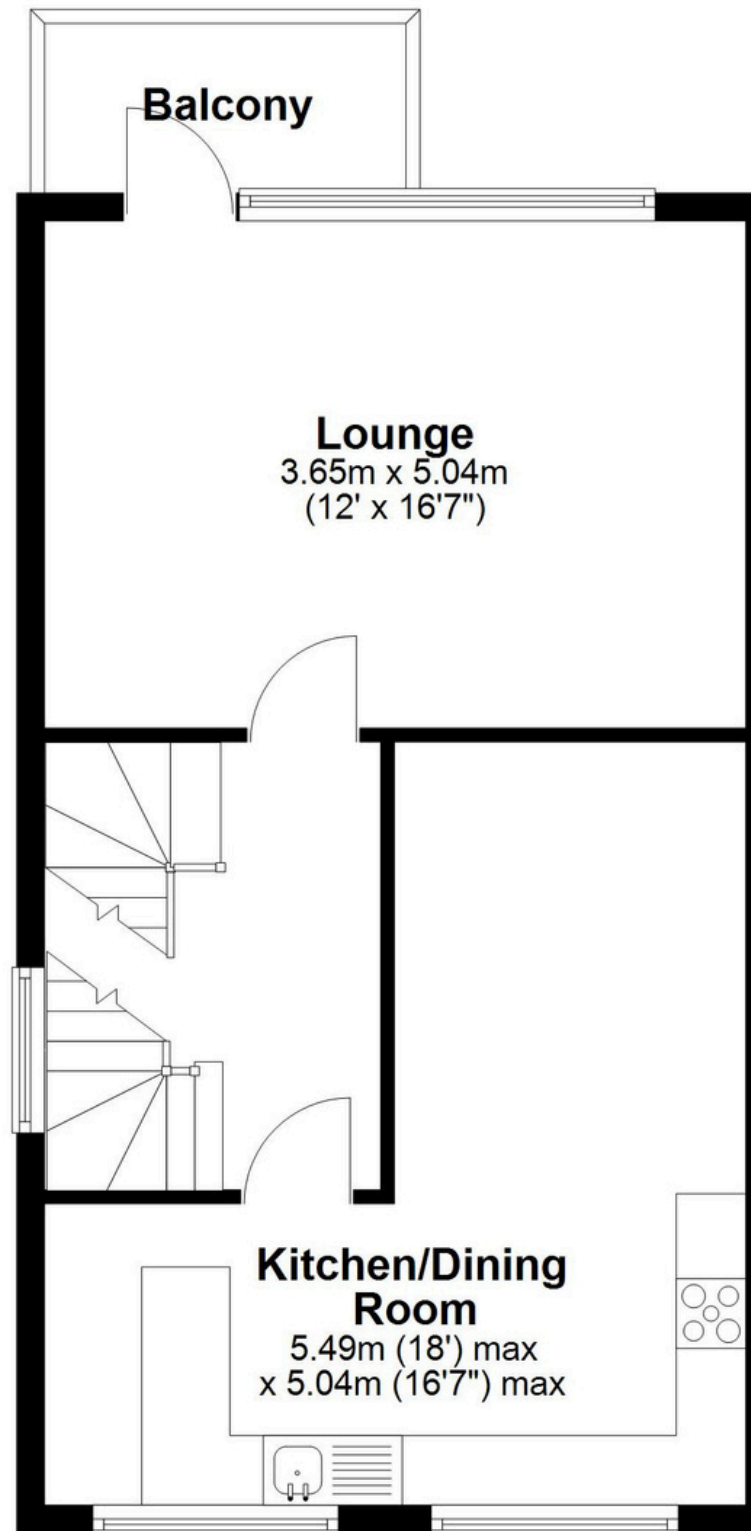
Tune into 'How's The Solihull Property Market Dom' weekly for a quick, insightful snapshot of the market.

The Mortgage Update

Get weekly insights and the best deals with our Mortgage Update, your shortcut to navigating the complex mortgage landscape confidently.

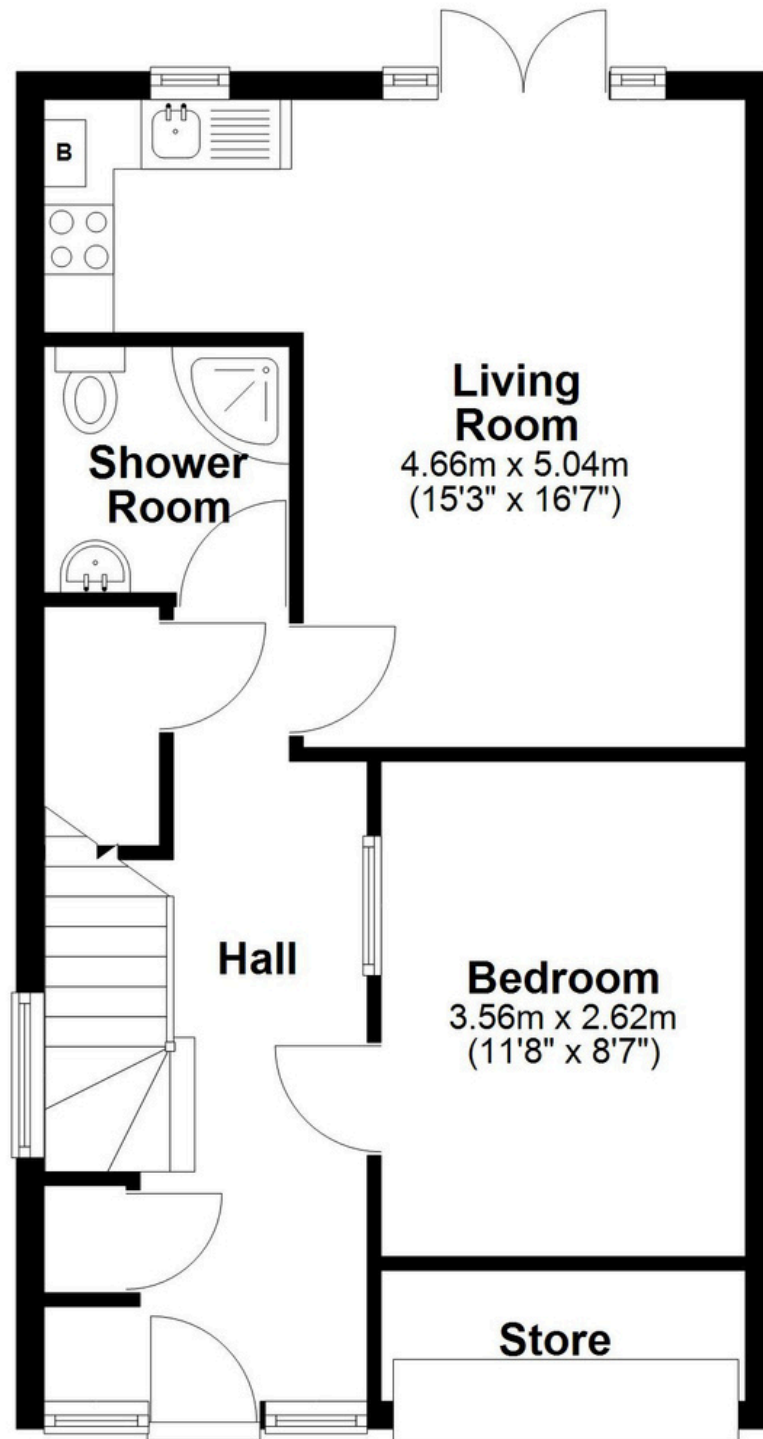
First Floor

Approx. 46.6 sq. metres (501.2 sq. feet)



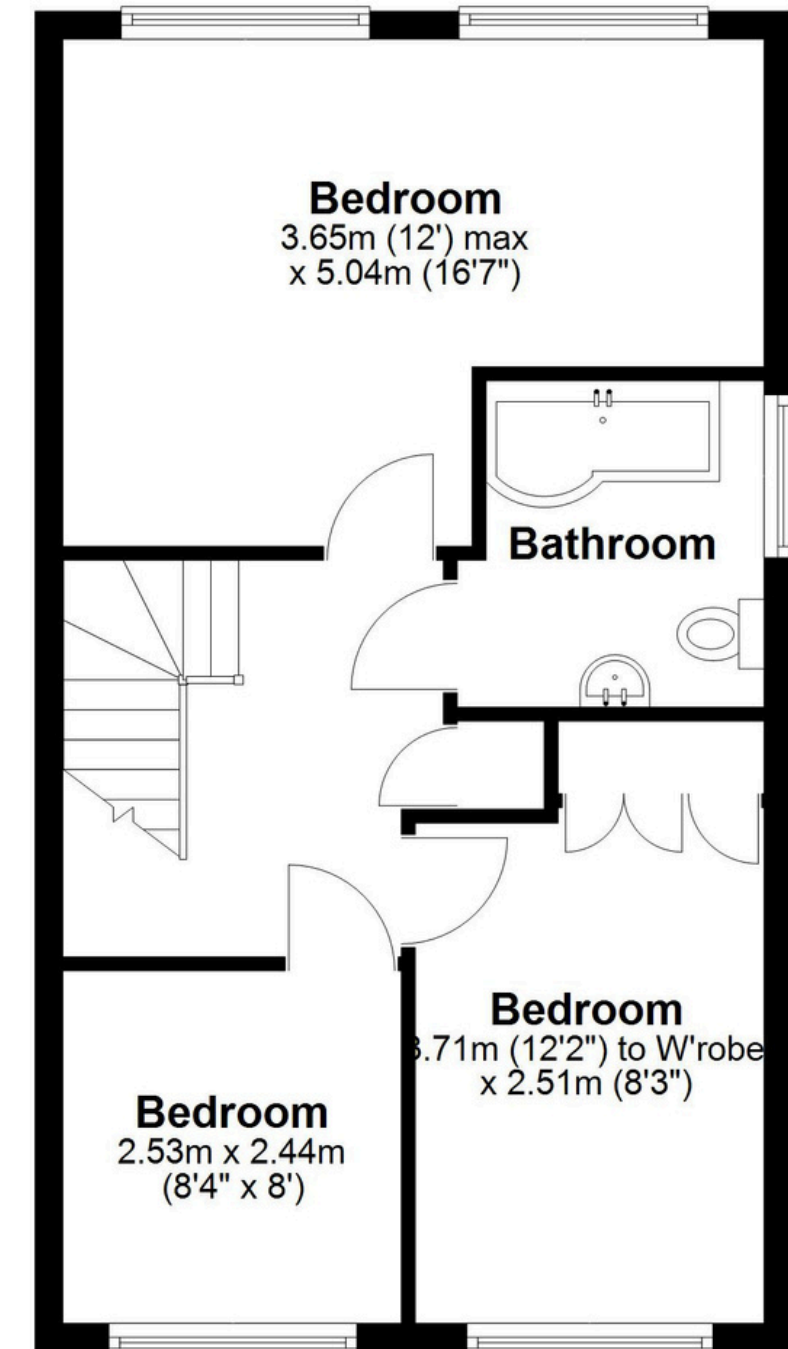
Ground Floor

Approx. 47.2 sq. metres (508.1 sq. feet)



Second Floor

Approx. 46.6 sq. metres (501.2 sq. feet)



Total area: approx. 140.3 sq. metres (1510.4 sq. feet)

This floor plan is for illustration purposes only, this is not intended to be a measured/scaled survey or comply with RICS guidelines. All measurements (including total floor area) openings, orientation and floor area are approximate. No details are guaranteed, they cannot be relied upon for any purpose and do not form part of any agreement. A party must rely upon its own inspection(s). No responsibility is taken for any error, omission, or mis-statement.
Plan produced using PlanUp.